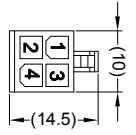


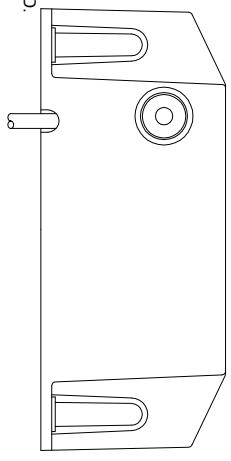
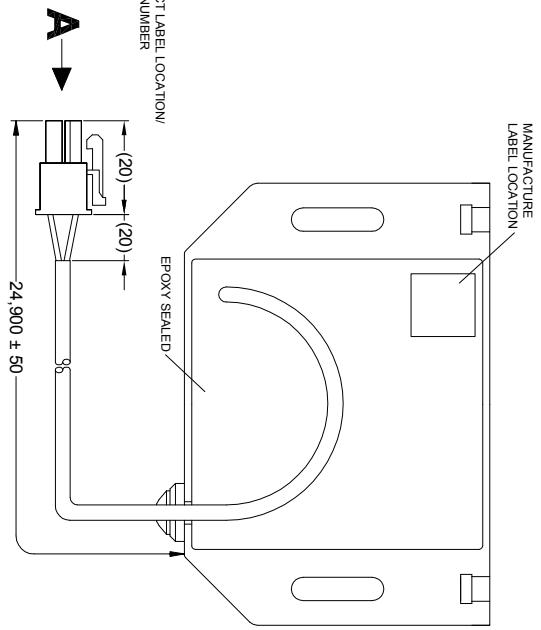
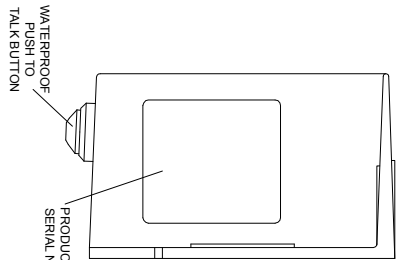
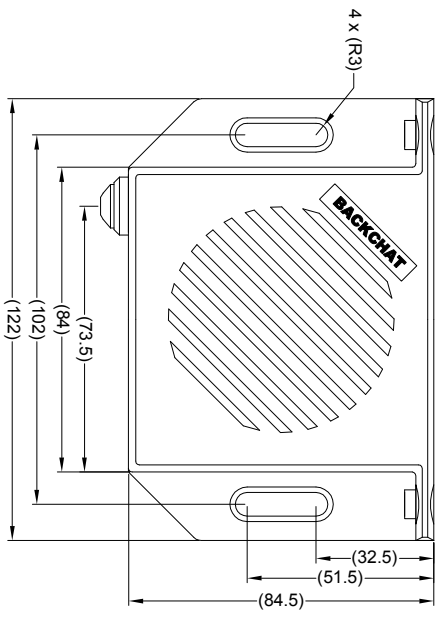
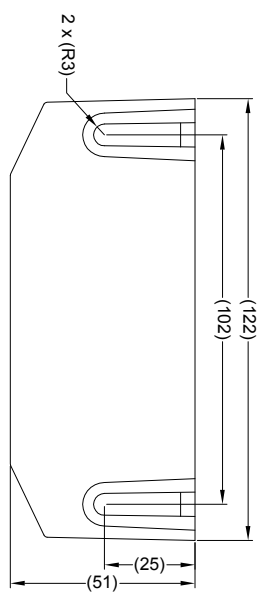
Revision Notes			
R1 - FRAME UPDATED, INTERCOM CABLE REVISED			
APA -	Drawn:-	Checked: JINEWMAN	Approved: DKERAI Date: 13/10/11
R2 - INTERCOM CABLE SPECIFICATION REVISED			
APA -	Drawn:-	Checked: LBRAR	Approved: DKERAI Date: 17/01/12
R3 - NOTES UPDATED TO INDICATE CORRECT LABEL DETAILS, STANDARDS UPDATED AS PER ECR CR-A253			
APA: AHEDDLE	Drawn: RBATES	Checked: MBUTLER	Approved: GPUTH Date: 07/02/14

VIEW A



MATING FACE

PIN #	WIRE COLOUR	DESCRIPTION
1	GREEN	COMMON GND
2	YELLOW	SPEAKER SIGNAL
3	RED	SWITCH SUPPLY
4	BLUE	SPEAKER SIGNAL



- NOTES:**
1. MATERIAL: ABS PLASTIC - ULTRA VIOLET STABILIZED.
 2. FINISH: BLACK
 3. FOR PRODUCT LABEL REFER TO LATEST REVISION OF DRAWING BE-002749-XX-13.
 4. FOR GIFTBOX LABEL REFER TO LATEST REVISION OF DRAWING BE-2325-XX-13.
 5. FOR MANUFACTURE LABEL REFER TO LATEST REVISION OF DRAWING BE-1990-XX-12.
 6. 2 X M6 X 25 BOLTS, 2 X M6 FLAT WASHER & 2 X M6 NUTS ARE SUPPLIED IN A PRESS SEAL BAG IN THE BOX.
 7. INTERCOM CABLE LENGTH IS MEASURED FROM CABLE ENTRY POINT ON HOUSING.

SPECIFICATION

RATED VOLTAGE: 12 AND 24 VOLTS DIRECT CURRENT (WORKING VOLTAGE RANGE: 10 THRU 30 VOLTS)
 RATED CURRENT: 1.0 AMPERES OR LESS
 SOUND PRESSURE: MAX 90/44 DECIBELS AT TEST VOLTAGE OF 14 AND 28 VOLTS
 CABLE THICKNESS: INTERCOM CABLE: 4 INSULATED CORE 7/0.22MM CABLE IN PVC SHEATHING
 INTERCOM CABLE INSULATION MUST BE FULLY POTTED AT POINT OF CONNECTION TO PCB.
 INTERCOM CABLE IS UNSCREENED DE9-17-24A TYPE CABLE.

OPERATION

SLAVE IS IDLE UNLESS THE SLAVE PUSH TO TALK BUTTON IS PRESSED
 UPON WHICH THE SLAVE WILL TRANSMIT TO THE MASTER.
 WHILEST IDLE THE SLAVE CAN RECEIVE FROM THE MASTER WHEN THE MASTER
 PUSH TO TALK BUTTON IS PUSHED.
 IF THE SLAVE & MASTER TRY TO TRANSMIT SIMULTANEOUSLY
 NEITHER UNIT WILL BE ABLE TO TRANSMIT OR RECEIVE.

PROPRIETARY NOTICE
 THIS DESIGN AND TECHNICAL INFORMATION APPEARING ON THIS DRAWING IS THE PROPERTY OF BRIGADE ELECTRONICS, AND IS DISCLOSED IN CONFIDENCE. IT IS NOT TO BE COPIED, REPRODUCED, REVEALED TO OR EXPLOITED BY OTHERS, EITHER IN WHOLE OR IN PART WITHOUT THE EXPRESS WRITTEN CONSENT OF BRIGADE ELECTRONICS.

BRIGADE
 www.brigade-electronics.com

Assembly PI Approval		Approved by		Checked by		Drawn by	
Angle of Projection		DKERAI		JINEWMAN		MBUTLER	
Third Angle		N/A		13/10/11		A1104M_TWO	
Status RELEASED		BC-VI-2 SLAVE					
Part No #0991		BE-001479-03-11					